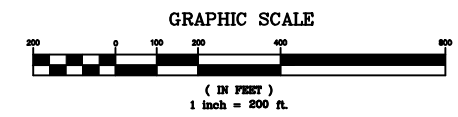
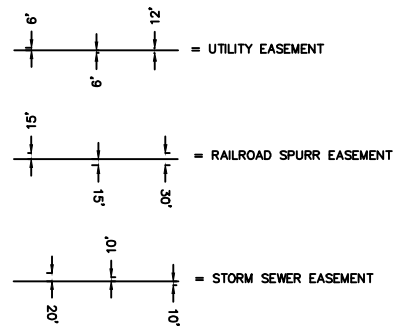
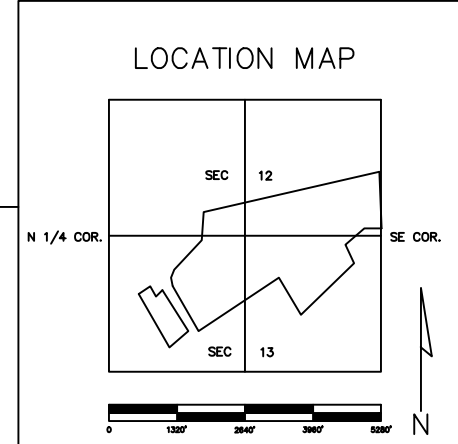


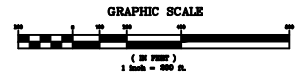
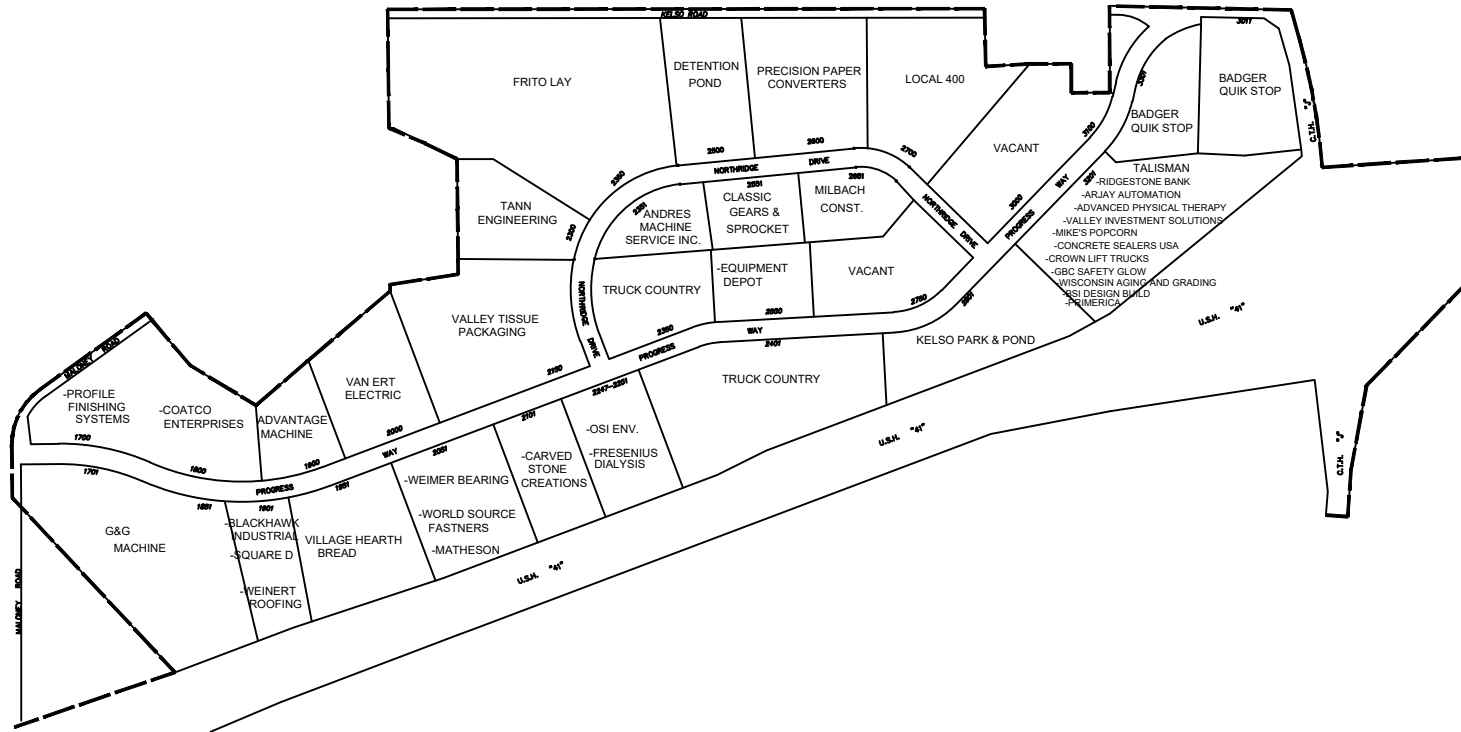
LEGEND

- = 2" IRON PIPE 30" LONG AND WEIGHING 3.65 LBS. PER LINEAL FOOT
 - = 2" IRON PIPE 30" LONG AND WEIGHING 3.65 LBS. PER LINEAL FOOT AT WOODEN R.O.W. POST.
 - = 3/4" X 24" REBAR SET
 - 1" IRON PIPE 24" LONG AND WEIGHING 1.13 LBS. PER LINEAL FOOT AT ALL OTHER LOT CORNERS.
- ALL DISTANCES ARE MEASURED TO THE NEAREST HUNDREDTH OF A FOOT.



CITY OF KAUKAUNA INDUSTRIAL PARK NO.1
 BEING PART OF PRIVATE CLAIM NO'S 35, 34, 33, 3 AND A PART
 OF THE SE 1/4, SE 1/4 OF SECTION 12 AND A PART OF THE NE 1/4, NE 1/4,
 OF SECTION 13, T-21-N, R-18-E, TOWN OF VANDENBROEK,
 OUTAGAMIE COUNTY, WISCONSIN.
LAST REVISED: 2/19 BY JH





CITY OF KAUKAUNA INDUSTRIAL PARK NORTH
PHASE 1 & PHASE 2 2-14-19
 LOCATED IN PART OF PRIVATE CLAIM NO. 3 AND PRIVATE CLAIM NO. 33
 AND THE NE 1/4 - SE 1/4, AND GOVERNMENT LOTS 1 AND 2
 OF SECTION 12, TOWNSHIP 21 NORTH, RANGE 18 EAST AND THE
 NORTHWEST 1/4 OF THE SOUTHWEST 1/4 OF SECTION 7, TOWNSHIP 21 NORTH
 RANGE 19 EAST IN THE CITY OF KAUKAUNA, OUTAGAMIE COUNTY, WISCONSIN

