



What does the update to the **Waste Ordinance**, Section 11.11, mean to me?

Updates to Cart Use, Placement, and Storage

All automated garbage and recycling carts must have a minimum clearance of four (4) feet between the cart, mailboxes, cars, trucks, trailers, houses, garages, sheds, trees, utilities, hydrants, etc. or they will *NOT* be collected.



UNACCEPTABLE:
Placement is *NOT* four (4) feet between carts or from garage.



ACCEPTABLE:
Placement is at minimum four (4) feet between carts and from garage.

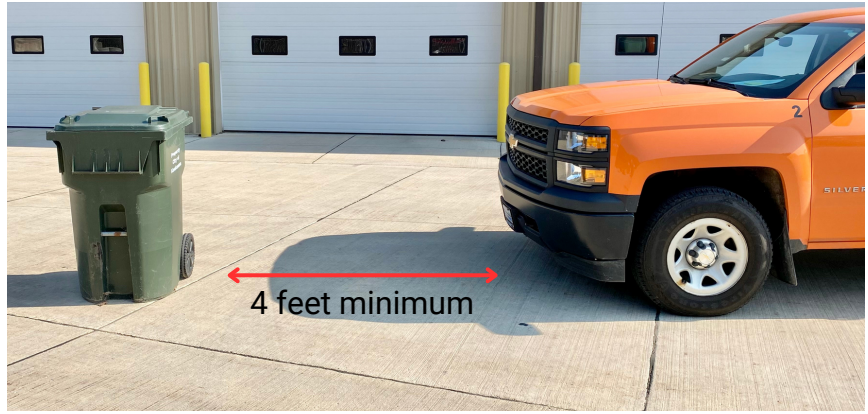


ACCEPTABLE:
Placement is at minimum four (4) feet between cart and mailbox and from garage.



UNACCEPTABLE:

Placement is *NOT* four (4) feet from car/truck.



ACCEPTABLE:

Placement is at minimum four (4) feet from car/truck.



UNACCEPTABLE:

Placement is *NOT* four (4) feet from utilities.



UNACCEPTABLE:

Placement is *NOT* four (4) feet from trees.

All lids must be closed when placing the carts or they will *NOT* be collected. Bags or waste that cause the lid to remain open are considered overflow and must be removed prior to scheduled pickup.



UNACCEPTABLE:

Bags/waste causing lid to remain open.



ACCEPTABLE:

Lid must be closed.

Other updates to Cart Use, Placement, and Storage:

Carts and containers shall be placed at the curb or alley line, if available, **not more than 24 hours prior to collection**. Carts shall not be placed in the roadway. All carts and containers shall be removed from the curb or alley line and stored within 24 hours after the scheduled collection day.

All waste and recycling carts and other containers when not placed for collection shall be **kept in inconspicuous locations** and not left on the curb or alley line, or any other location near the right-of-way.

Continue to next page for explanation of changes to Large and Irregular and Brush collections.

Updates to Large and Irregular and Brush Collections

Proposed Beginning January 1, 2024

Not more than five (5) large and irregular items may be placed by a residential property. Each individual piece of furniture, other items not in your cart, or 30-gallon containers that weigh no more than 50 pounds with material not more than 48" tall/long, count as one (1) item each. White Goods must have pre-paid stickers from the Street Department and *do not* count as one of your 5 items.



UNACCEPTABLE:

More than five (5) items placed at the curb will *NOT* be picked up.



ACCEPTABLE:

Orderly placement of five (5) items at the curb. Furniture and 30-gallon container do not weigh more than 50 pounds.



UNACCEPTABLE:

More than five (5) items placed at the curb will *NOT* be picked up.



ACCEPTABLE:

30-gallon container that weighs no more than 50 pounds with material not more than 48" tall/long. This counts as one (1) item during large and irregular pick-up.

Other updates to Large and Irregular and Brush Collections:

Large and irregular waste, brush, and white goods will be collected once per month from April-October. No large and irregular or brush collection will occur in January, February, March, November, or December. White goods will still be collected during these off months by appointment.

A special Christmas tree brush collection will be held for two consecutive weeks after the December holiday season, for Christmas trees and other associated trimmings. This collection will be noted on the City Calendar.

Continue to next page for explanation of updates to solid waste collection based on your Zoning.

Updates to solid waste collection based on your Zoning

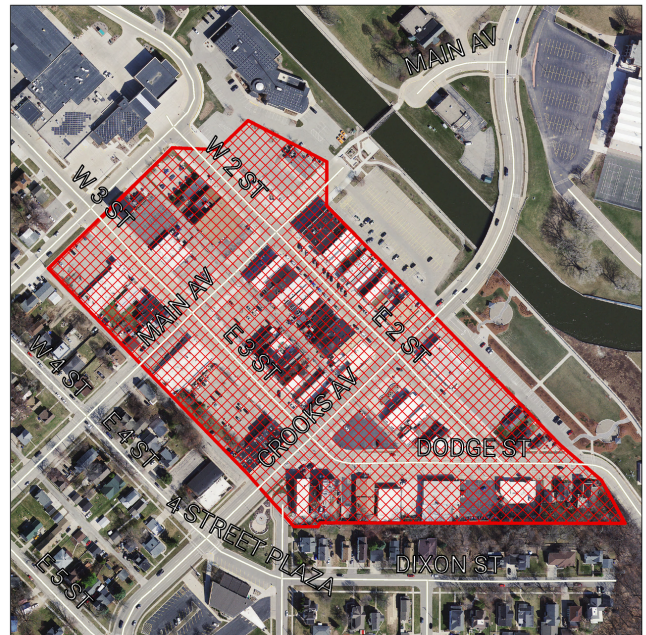
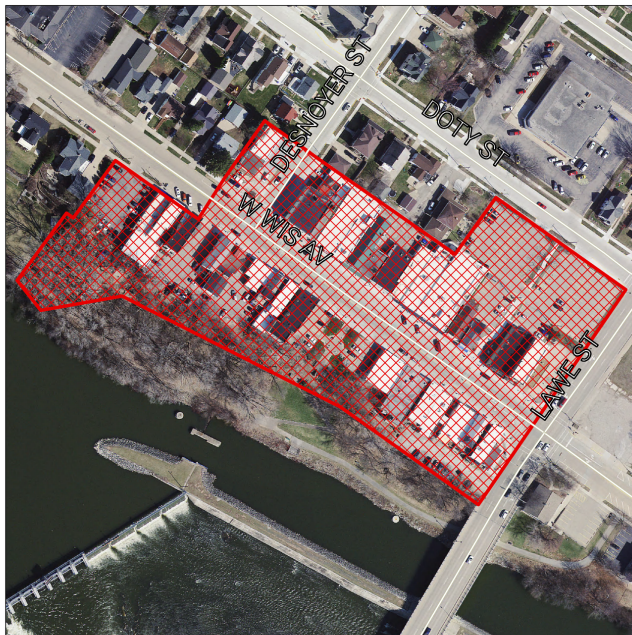
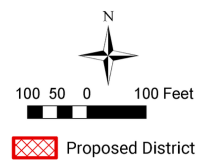
Proposed Beginning June 1, 2024

1. Industrial, Industrial Park, Industrial/manufacturing waste/recycling is not collected by the City.
2. Institutional Zoning waste/recycling is not collected by the City.
3. Multifamily Zoning waste/recycling is not collected by the City.
4. Commercial Highway Zoning waste/recycling is not collected by the City.
5. Commercial Core District within the Downtown Core District mapped area will remain unchanged at this time, If the City currently collects your waste, it will continue to do so in the current manner.
6. Commercial Core District outside of the Downtown Core District mapped area, no City dumpsters will be collected outside of the Downtown Core area, owners may choose to purchase and use up to 2 green waste carts or have the option to contract for private waste collection. Recycling shall be by private collection.



Trash Collection District

Downtown Core District Map



To view the full Waste Ordinance, Section 11.11, [click here](#).