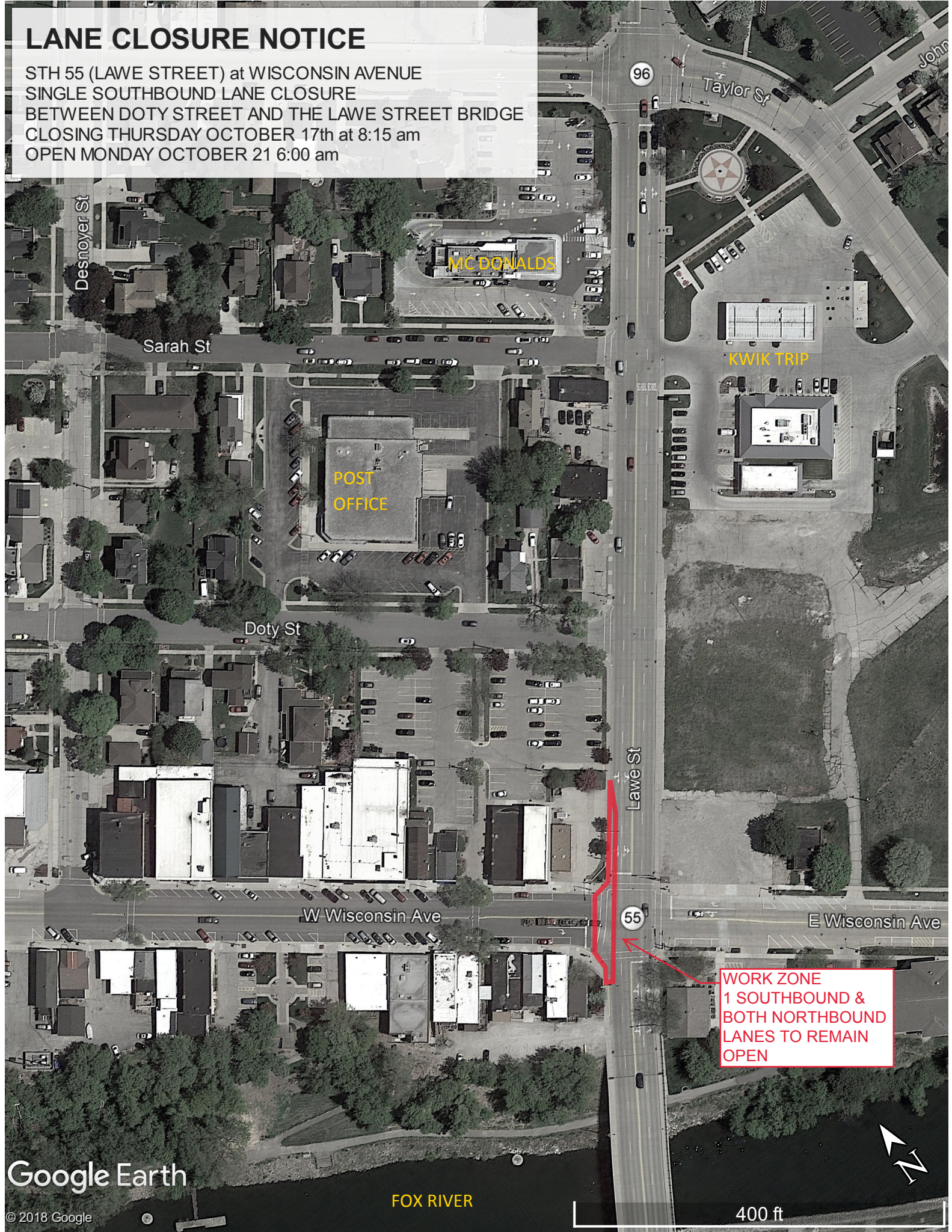


LANE CLOSURE NOTICE

STH 55 (LAWE STREET) at WISCONSIN AVENUE
SINGLE SOUTHBOUND LANE CLOSURE
BETWEEN DOTY STREET AND THE LAWE STREET BRIDGE
CLOSING THURSDAY OCTOBER 17th at 8:15 am
OPEN MONDAY OCTOBER 21 6:00 am



WORK ZONE
1 SOUTHBOUND &
BOTH NORTHBOUND
LANES TO REMAIN
OPEN